



Increasing Objective Cardiometabolic Burden Associated With Attenuations in the P3b Event-Related Potential Component in Older Adults

Hannah A. D. Keage^{1*}, Daniel Feuerriegel², Danielle Greaves¹, Emma Tregoweth³, Scott Coussens¹ and Ashleigh E. Smith³

¹ Cognitive Ageing and Impairment Neurosciences Laboratory, Justice and Society, University of South Australia, Adelaide, SA, Australia, ² Melbourne School of Psychological Sciences, University of Melbourne, Parkville, VIC, Australia, ³ Alliance for Research in Exercise, Nutrition and Activity, Allied Health and Human Performance, University of South Australia, Adelaide, SA, Australia

OPEN ACCESS

Edited by:

Michael Malek-Ahmadi,
Banner Alzheimer's Institute,
United States

Reviewed by:

Antonio Giuliano Zippo,
National Research Council, Italy
Rufus Olusola Akinyemi,
University of Ibadan, Nigeria

*Correspondence:

Hannah A. D. Keage
hannah.keage@unisa.edu.au

Specialty section:

This article was submitted to
Dementia and Neurodegenerative
Diseases,
a section of the journal
Frontiers in Neurology

Received: 24 November 2019

Accepted: 29 May 2020

Published: 30 July 2020

Citation:

Keage HAD, Feuerriegel D, Greaves D, Tregoweth E, Coussens S and Smith AE (2020) Increasing Objective Cardiometabolic Burden Associated With Attenuations in the P3b Event-Related Potential Component in Older Adults. *Front. Neurol.* 11:643. doi: 10.3389/fneur.2020.00643

Cardiometabolic diseases and risk factors increase the risk of late-life cognitive impairment and dementia and have also been associated with detrimental gray and white matter changes. However, the functional brain changes associated with cardiometabolic health in late-life are unclear. We sought to characterize these functional changes by recording event-related potentials (ERPs) during an n-back working memory task (0, 1, and 2 back) in 85 adults (60% female) between 50 and 80 years of age. Due to a stratified recruitment approach, participants varied widely in relation to cognitive function and cardiometabolic health. Standard and objective cut-offs for high blood glucose, waist to hip ratio (i.e., obesity), high blood cholesterol, and hypertension were employed to generate a summative score for cardiometabolic burden (none, one, or two or more above cut-off). Mixed effects modeling (covarying for age and gender) revealed no statistically significant associations between cardiometabolic burden and visual P1 and N1 component amplitudes. There was a significant effect for the P3b component: as cardiometabolic burden increased, P3b amplitude decreased. We show that cardiometabolic factors related to the development of cognitive impairment and dementia in late-life associate with brain activity, as recorded via ERPs. Findings have relevance for the monitoring of lifestyle interventions (typically targeting cardiometabolic factors) in aging, as ERPs may provide a more sensitive measure of change than cognitive performance. Further, our results raise questions related to the findings of a broad range of ERP studies where the groups compared may differ in their cardiometabolic health status (not only in psychological symptomatology).

Keywords: event-related potential, cardiovascular, cardiometabolic, vascular, aging, cognition

INTRODUCTION

Cardiometabolic diseases and risk factors increase the risk of late-life cognitive impairments, including dementia (1, 2). For example, Type 2 diabetes, obesity, physical inactivity, hypertension, and high cholesterol all increase dementia risk. The greatest dementia risk is conveyed if these cardiometabolic factors are present in mid-life and early late-life, with null or paradoxical relationships seen in the oldest old, typically defined as those 85 years and over (3, 4). How these cardiometabolic factors affect brain structure and function between mid- and late-life is the focus of current research, as it has been established that dementia-related pathologies accumulate decades before clinical symptoms (5). Such knowledge will enable us to understand the underlying neurophysiology of cardiometabolic-related late-life dementia risk.

Cardiometabolic factors, independently (6–11) and in combination (12, 13), have been reported to correlate with global and regional reductions in thickness and brain volume, along with more rapid cortical thinning over time. As compared to controls, older adults with Type 2 diabetes have lower global gray and white matter volumes (11); reduced frontal white matter and parieto-occipital gray matter volumes (6); reduced right hemispheric cortical surface and volume (7); and increased cortical thinning within the middle temporal gyrus, posterior cingulate gyrus, precuneus, entorhinal cortex, and right lateral occipital gyrus (10). In young to mid-adulthood, widespread cortical thinning has been shown to relate independently to two obesity measures: body mass index (BMI) and visceral adipose tissue (9).

Tchistiakova and Macintosh (12) combined cardiometabolic factors into a summative index (selection into study based on having one, two or three factors), from diabetes, smoking, blood pressure, fasting blood glucose, and APOE genotype, in older adults from the Alzheimer's Disease Neuroimaging Initiative (ADNI) with and without Mild Cognitive Impairment (MCI). Many factors (e.g., blood pressure) were extracted from medical records (including self-reported medication lists), rather than objectively; and notably, this study did not look at the effects of having no risk factors (i.e., participant selection was based on having at least one factor). Increases in the summative cardiometabolic factor score were associated with thinning of the temporal and frontal cortices (predominantly within the right hemisphere) in the MCI group, but not the control group (12). Assessing a larger age range (44–79 years) in the UK Biobank sample, cardiometabolic factors (smoking, hypertension, pulse pressure, diabetes, hypercholesterolemia, body mass index, and waist-hip ratio) had detrimental and additive effects on the volumes of frontal and temporal cortex, subcortical structures, and white matter fibers (association and thalamic pathways) (13). There appeared to be no hemispheric-bias in these results, and cognitive performance of the participants was not reported (13).

Poor cardiometabolic health has also been related to white matter structure, both cross-sectionally and longitudinally (13–16). A key and recent paper by Fuhrmann et al. (16) demonstrated that blood pressure (lower diastolic and higher systolic), body mass (higher), and heart rate (higher) had

independent detrimental effects on white matter macro- and micro-structure in a large cross-sectional population-based study from the UK.

In addition to structural brain changes, there is also evidence of functional brain changes associated with cardiometabolic risk factors for cognitive impairment and dementia (17, 18). In a sample of older adults, those with a higher cardiometabolic risk factor score [based on the Framingham risk assessment; (19)] had greater task-related activation (fMRI) within the left inferior parietal region during an executive function task (adapted Flanker task); and this activation related to poorer performance (18). Notably, no individual cardiometabolic factor was significantly associated with activation in this region (i.e., the effect was only apparent when factors were combined). Braskie et al. (17) utilized a verbal paired associates learning task, and reported that in older cognitively healthy adults, higher cardiometabolic risk (summative score of BMI, systolic blood pressure and total cholesterol; with a focus on the former two) was associated with increased activation (as indexed using fMRI) within a large network including the posterior cingulate cortex, frontal, temporal, and parietal regions; these associations held when controlling for the presence of the APOE $\epsilon 4$ allele (the major genetic risk allele for late-life dementia).

There appears to be little research using electroencephalography (EEG) to study the effects of cardiometabolic factors (associated with cognitive decline and dementia) on brain function. EEG has comparatively high temporal resolution compared to fMRI and enables insights into how cardiometabolic burden impacts different stages of sensory, perceptual, and decision-making processes. Event-related potentials (ERPs) are epochs of EEG data time-locked to a stimulus, typically averaged over multiple presentations of the same stimulus. ERPs enable us to index the time-course of critical processes for everyday cognition, including visual perception, categorization, and memory-related processes. We recorded ERPs while participants completed an executive function task, as performance in this domain appears particularly susceptible to cardiometabolic risk factors (18, 20, 21) and has been reported to be the earliest domain affected by cardiometabolic factors, with impairment in other cognitive domains becoming apparent as cardiometabolic and vascular diseases progress (22, 23). We also took the summative cardiometabolic factor approach [similar to (12, 13)], given that individual risk factors rarely occur in isolation.

Our primary aim was to determine whether objective cardiometabolic burden was associated with ERP component amplitudes during an executive function task, and if associations were larger for broadly distributed ERP components, such as the P3b, as compared to more localized ERP components, such as the visual P1 and N1. We employed the widely used n-back task to evoke the P1, N1, and P3b components, so that we could measure the effects of cardiometabolic burden on their amplitudes. This ERP-based approach enabled us to determine which components (each associated with different perceptual and cognitive processes) are attenuated, which is a critical and missing link between cardiometabolic burden and alterations in brain structure and performance. We hypothesized that

smaller ERP component (P1, N1, and P3b) amplitudes would be associated with increasing cardiometabolic burden. A secondary aim investigated through exploratory analyses was to investigate if these cardiometabolic effects were dependent on hemisphere and cognitive impairment, as reported by Tchistiakova and Macintosh (12) using structural MRI.

METHODS

Participants

A total of 88 adults (59% female) between 50 and 80 years of age completed the study. Participants were selectively recruited based on their self-reported cardiometabolic burden, so to gain a broad distribution of burden scores. Three participants were excluded from these analyses due to poor performance on the n-back tasks (greater than three standard deviations below the mean for either of both targets and non-targets; and/or below chance when assessing performance across targets and non-targets). Therefore, the total number of participants in these analyses was 85, with 51 being female (60%). The mean age was 65.1 years ($SD = 7.5$). Over half (54%) of participants were classified as having MCI or dementia according to the cut-off of ≤ 92 on the Addenbrooke's Cognitive Examination III (ACE-III) (24). ACE-III scores ranged between 72 and 99.

Procedure

The study was approved by the University of South Australia Human Ethics Committee. Males and females aged 50–80 years were recruited if they self-reported as either low or high cardiovascular disease risk using the online Framingham risk assessment (19, 25). Within each decade age range of 50–59, 60–69, and 70–79 years we intended to recruit 30 participants (15 self-reported low cardiovascular disease risk and 15 self-reported high risk). Exclusion criteria were: history of stroke, clinical dementia diagnosis, blindness or vision problems not corrected by glasses/contact lenses, current diagnosis of a psychiatric disorder, an episode of unconsciousness for more than 5 min, and any known intellectual disabilities. Participants attended two 3-h appointments separated by ~ 8 –10 days. During session one, informed consent, general health, cognition, fasted blood tests (minimum 8-h fast), anthropometric assessments, blood pressure (arterial compliance measurement), and dietary assessments were conducted. EEG data was recorded during the second session.

Cognitive Performance

The ACE-III is a measure of cognitive functioning and can be used to screen for cognitive impairment and dementia in older adults (26). The ACE-III consists of five subscales assessing attention/orientation (18 points), memory (26 points), fluency (14 points), language (26 points), and visuospatial abilities (16 points); therefore, possible score range of 0–100. The test takes ~ 15 –20 min to administer and has demonstrated (along with its predecessor, the ACE-Revised) very good reliability, with an alpha coefficient of 0.8 (24, 26). An overall ACE-III score is summed from the subtests, with higher scores indicating better cognitive function.

Cardiometabolic Burden

Blood glucose, waist to hip ratio (obesity), total blood cholesterol, and blood pressure were used as our cardiometabolic burden measures. Notably, we selected total blood cholesterol and not HDL or LDL, as it is this measure that demonstrates associations with incident cognitive impairments in late-life, such as MCI and dementia (27). Although there are various cut-offs reported across the previous literature, we used the most frequently reported. Participants were classified as positive for each cardiometabolic factor based on the following cut-offs: blood glucose ≥ 6.5 mmol/L (28, 29); waist to hip ratio ≥ 0.95 for men or ≥ 0.90 for women (30, 31); total blood cholesterol ≥ 5.5 mmol/L (32); and if either diastolic blood pressure (BP) was ≥ 90 mmHg or systolic blood pressure was ≥ 140 mmHg (33, 34).

Waist to hip ratios were obtained by research assistants trained in the standard protocols used by the International Society for the Advancement of Kinanthropometry. Using a luftkin executive thin line 2 mm metal tape measure, waist measures were taken at the point of visible narrowing between the 10th rib and the crest of the ilium during normal expiration. In the event there was no narrowing the measurement was taken at the mid-point between the lower costal (10th rib) border and iliac crest. Hip measures were taken at the greatest point of posterior protuberance of the buttocks. Two separate measures were taken and if the measures differed by $>20\%$, a third measure was taken.

Participants rested horizontally for a minimum of 5 min in a dark room prior to blood pressure measurements. Blood pressure was non-invasively measured in conjunction with arterial compliance using a cardiovascular profiler (HDI cardiovascular profiler CR 2000, Hypertension Diagnostics, Minnesota, United States). The blood pressure cuff was fitted over the left brachial artery. Three readings were performed at 5-min intervals and the average reading was calculated. If readings differed $>20\%$, an additional reading was completed.

Approximately 23 mL of whole blood was collected via venepuncture into 2×9 mL ethylenediaminetetraacetic acid (EDTA) (18 mg) anticoagulant and 1×4 mL sodium fluoride Vacuette tubes (grenier bio-one, Kremsmünster, Austria). Following plasma separation at 4,000 rpm for 10 min, samples were frozen initially at -20°C for up to 1 week before being transferred to -80°C until analysis samples were aliquoted into Eppendorf tubes and stored at -80°C . Cholesterol, triglycerides, HDL, and glucose (from serum sample) were analyzed in duplicate with a commercial assay kit (including quality controls and calibrators) using the KONELAB 20XTi (ThermoFisher, Massachusetts, United States).

N-Back Tasks

Stimuli consisted of five capital letters (F, H, L, N, and T) presented in white font on a black background, subtending a visual angle of 1.4° (width) by 1.5° (height). For each n-back task, 50 of the stimuli were targets, and 100 were non-targets. Participants were seated comfortably 60 cm in front of a computer monitor. Stimuli were presented in a pseudorandomized order one at a time for 500 ms, followed by a blank screen. The inter-stimulus interval was jittered from 1,200

to 1,500 ms. Participants completed 0-, 1-, and 2-back versions of the task. Each n-back task lasted ~5 min.

For the 0-back task, participants were instructed to respond to the target letter (“L”) with one hand (counterbalanced across participants). The 1-back task required participants to respond to a target whenever the letter presented matched the one presented immediately before it (i.e., the stimulus that was “one back”). For instance, if presented with the stimuli N-F-T-T, the participant would respond to the first three letters as non-targets, and the second “T” as a target. Participants responded to target letters with one hand, and non-target letters with their other hand. The 2-back task required participants to respond to a target whenever the letter presented matched the one presented two trials previously. For example, if presented with the letters L-H-N-F-N, the participant would respond to the second “N” as a target, and all other letters as non-targets. As with the other n-back tasks, target letters were responded to with one hand, and non-target letters with the opposite hand. For all n-back tasks, the first three stimuli were never targets and there were never more than two targets or more than two of the same stimulus presented in consecutive trials.

A short practice session was included before commencing each n-back task. Participants undertook one of two versions of each n-back task, which varied in trial order. The task version used was counterbalanced across participants. Response speed and accuracy were equally emphasized. Response hands assigned to targets and non-target response keys for responses was counterbalanced across participants.

EEG Recording and Processing

We recorded EEG from 25 (Fp1, Fp2, AFpz, Fz, F3, F7, T7, C3, Cz, Pz, P3, P7, PO7, PO3, O1, Oz, O2, PO4, PO8, P8, P4, C4, T8, F8, F4) active electrodes using a Biosemi Active Two system (Biosemi, the Netherlands). Recordings were grounded using common mode sense and driven right leg electrodes (<http://www.biosemi.com/faq/cms&drl.htm>). EEG was sampled at 1,024 Hz (DC-coupled with an anti-aliasing filter, -3 dB at 204 Hz). Electrode offsets were kept within ± 50 μ V. We processed EEG data using EEGLab V.13.4.4b (35) and ERPLab V.4.0.3.1 (36) running in MATLAB (The Mathworks).

Data were resampled to 512 Hz and re-referenced offline to a nose reference. Bad sections of EEG data (e.g., containing large or atypical artifacts) were removed manually. Excessively noisy channels were identified by visual inspection and were not included as input data for the independent components analysis (ICA). 50 Hz line noise was identified using Cleanline (37) using a separate 1 Hz high-pass filtered dataset (EEGLab Basic FIR Filter New, zero-phase, finite impulse response, -6 dB cutoff frequency 0.5 Hz, transition bandwidth 1 Hz). Identified line noise was subtracted from the unfiltered dataset [as recommended by (38)]. A separate dataset was processed in the same way, except a 1 Hz high-pass filter was applied (filter settings as above) to improve stationarity for the ICA [as done by (39)]. ICA was performed on the 1 Hz high-pass filtered dataset [RunICA extended Infomax algorithm; (40)]. Independent component information was transferred to the unfiltered dataset. This method ensured that the ICA could be run using highly stationary data without

needing to use a harsh high-pass filter on the dataset used in our subsequent ERP analyses. Independent components associated with ocular activity (i.e., blinks and saccades) were identified and removed according to guidelines in Chaumon et al. (41).

Bad channels were interpolated using the cleaned data. The datasets were then high-pass filtered at 0.1 Hz and low-pass filtered at 30 Hz (EEGLab FIR Filter New, default transition band widths). Data was epoched from -100 to $+800$ ms. Epochs containing amplitudes larger than ± 100 μ V in any channel were excluded from analyses. ERPs were then averaged across epochs according to target/non-target status and participant response (hit/miss/correct rejection/false alarm) for correct trials only (i.e., error trials excluded).

We then calculated the mean amplitudes for the P1, N1, and P3b ERP components using the following time windows: 80–120 ms for the visual P1, 120–180 ms for the visual N1, and 300–550 ms for the P3b. Only trials with correct rejections of non-target stimuli were included, as we had no hypotheses related to target detection processes, and this condition had more trials for averaging (therefore reducing noise). Further, the P3a component is also prominent following target stimuli, which is largest over fronto central sites (rather than posterior channels for the P3b), which was another reason for the exclusion of target trial ERPs from analyses. For the P1 and N1 components the following electrodes were included (averaged relative to hemisphere): P7, PO7, and O1 (left hemisphere), and P8, PO8, and O2 (right hemisphere). For the P3b components the P3 and C3 electrodes were averaged for the left hemisphere, and P4 and C4 for the right hemisphere.

Statistical Approach

STATA v15.1 IC was used for all analyses. Behavioral data during the n-back tasks were analyzed using three separate mixed effects models with maximum likelihood estimation and ID set as both a random intercept and slope, with the following outcomes: (1) reaction time to correct hits to targets, (2) accuracy of hits to targets, and (3) accuracy of correct non-responses to non-targets. For each of these models, difficulty (0-, 1-, and 2-back), cardiometabolic burden (0 = none, 1 = one, 2 = two or factors above cut-off), along with an interaction between difficulty and cardiometabolic burden were used as predictors.

Mixed effects modeling with maximum likelihood estimation, with ID set as both a random intercept and slope, was conducted for each component mean amplitude as outcomes: P1, N1, and P3. Age and gender were used as covariates. Cardiometabolic burden (0 = none, 1 = one, 2 = two or factors above cut-off) was used as the predictor variable, which enabled us to address our hypotheses; with the other predictors being hemisphere (left and right hemisphere electrodes) and difficulty (0-, 1-, and 2-back tasks). We included hemisphere and difficulty to make parallels with previous results, given the n-back task has been widely used, and further, to compare effect sizes with cardiometabolic burden. We ran two sets of follow-up exploratory stratified analyses, which were stratified by (1) hemisphere (left and right as separate models) and (2) cognitive impairment (those ≤ 92 on the ACE-III), in line with structural MRI findings from Tchistiakova and Macintosh (12). To account for multiple comparisons, we

lowered our critical alpha value to 0.017 (0.05 divided by 3) for our ERP analyses, considering that we assessed three ERP components (P1, N1, and P3). Cohen f^2 was our measure of effect size, with f^2 values >0.02 , >0.15 , and >0.35 representing small, medium, and large effect sizes, respectively.

RESULTS

Distribution of Cardiometabolic Burden

The distribution of cardiometabolic burden is displayed in **Table 1**, relative to each of the four cardiometabolic factors cut-offs, and the summative variable (number of factors above the cut-off: 0, 1, or 2 or more). Our participant sampling strategy resulted in a roughly equivalent number of participants with 0, 1, and 2 or more risk factors.

Performance on the n-Back Tasks Relative to Cardiometabolic Burden

Performance on the n-back tasks across the cardiometabolic burden groups is displayed in **Table 2**. Mixed effects modeling revealed no significant effect of cardiometabolic burden ($p = 0.922$) nor interaction between cardiometabolic burden and difficulty ($p = 0.719$), on reaction times (to correct hits to targets). When the accuracy of target detection was used as the outcome, there was a significant interaction between vascular burden and difficulty (beta = -1.455 , SE = 0.700 , $z = -2.08$, $p = 0.037$, 95%CI -2.827 to -0.085), which reflected that the number of correct hits to targets were lower in those with high cardiometabolic burden, but only when difficulty was high; there was no main effect of cardiometabolic burden ($p = 0.207$). This pattern of effects was mirrored when assessing the accuracy of correct rejections of non-targets; however, the effect for the interaction missed conventional significance ($p = 0.096$). Difficulty was a significant predictor in all three models, with RT slowing and accuracy decreasing as difficulty increased (all $p < 0.001$).

Associations Between Cardiometabolic Burden and ERP Component Amplitude

Table 3 details all results from the primary mixed effect models. For the P1 component, the mixed model revealed a small effect for cardiometabolic burden (with smaller amplitudes as cardiometabolic burden increased); however, this did not meet our adjusted alpha value ($p = 0.037$; alpha = 0.017). For the mixed models with N1 as the outcome, there was an effect of difficulty, with smaller amplitudes for more difficult versions of the task. In this model no other effects were statistically significant. For the P3b component, the mixed effects model revealed significant main effects for both hemisphere and cardiometabolic burden, with the P3b component larger over the right hemisphere, and smaller P3b components recorded from participants with higher cardiometabolic burden. For each one unit increase in cardiometabolic burden (i.e., $0-1$, and $1-2$) the amplitude of the P3b decreased (on average) by $0.703 \mu V$ (in the context of the P3b having a mean of $1.320 \mu V$ and SD of 2.078 across all conditions). Notably, the effect size for cardiometabolic

burden was small ($f^2 < 0.001$). Grand average ERPs for each cardiometabolic burden group are displayed in **Figure 1**.

Secondary analyses assessed effects stratified by hemisphere (results displayed in **Table 4**) and cognitive impairment status (results displayed in **Table 5**). The observed pattern of effects did not appear to differ between the hemispheres. Effects did appear to differ between cognitive impairment groups, with cardiometabolic burden displaying significant negative effects for both P1 and P3b amplitudes within the cognitively impaired group only (both with a small effect size). Notably, we took this stratified approach in line with Tchistiakova and Macintosh (12). An alternative would be including interaction terms (with hemisphere and cognitive impairment status, respectively); when we did do this, interaction effects were no longer statistically significant, due to the small effect sizes visible in the stratified analyses.

DISCUSSION

We show that objective cardiometabolic burden is associated with attenuations in P3b ERP component amplitudes during an executive function task. Although effects were in the same direction for the earlier P1 and N1 components (i.e., smaller components with increasing cardiometabolic burden), effects were small and not statistically significant. When those with and without a cognitive impairment were assessed separately, a similar effect on P3b amplitudes was apparent, along with an effect for the P1 component, in those with cognitive impairment. This pattern of effects is similar to a structural MRI study by Tchistiakova and Macintosh (12) that found cardiometabolic burden was associated with volume reductions only in those with MCI. However, we did not find the right hemispheric predominance as reported by Tchistiakova and Macintosh (12). The biological mechanisms at play likely relate to oxidative stress and inflammation, blood brain barrier integrity, and neurovascular coupling, along with nitric oxide bioavailability (42, 43), and are undoubtedly inter-related.

The P3b is a large and broad component, seen across much of the scalp, whereas the earlier components are relatively small and localized over occipito-parietal regions, as is typical for visually presented stimuli. We propose two reasons for seeing a significant effect for the P3b, but not earlier components: (1) small effect sizes for cardiometabolic burden and (2) differences in the extent of neural generators. Small effect sizes for cardiometabolic burden on brain structure have been previously reported (13). Given the effect size of cardiometabolic burden was small (as seen here across all components), such effects would be preferentially found for larger amplitude ERP components that can be recorded with a high signal-to-noise ratio, such as the P3b. In terms of neural generators, the P1 and N1 predominately relate to activity in visual cortex and ventral temporal areas, whereas the candidate regions contributing to the P3b include frontal, parietal, and temporal-occipital regions [e.g., (44, 45)]; the exact regions remain a topic of debate. Frontal and temporal cortical thinning has been reported to be associated with cardiometabolic burden in a large UK sample (13); other

TABLE 1 | Distribution of cardiometabolic burden across sample.

	High blood glucose (≥ 6.5 mmol/L)	High waist:hip (≥ 0.95 men/ ≥ 0.90 women)	High total blood cholesterol (≥ 5.5 mmol/L)	Hypertension (diastolic ≥ 90 /systolic ≥ 140 mmHg)	Summative cardiometabolic burden		
					0	1	≥ 2
Women (<i>n</i> = 51)	9 (18%)	9 (18%)	20 (39%)	14 (27%)	15 (29%)	23 (45%)	13 (25%)
Men (<i>n</i> = 34)	13 (38%)	20 (59%)	8 (24%)	13 (38%)	5 (15%)	11 (32%)	18 (53%)
Total (<i>n</i> = 85)	22 (26%)	29 (34%)	28 (33%)	27 (32%)	20 (24%)	34 (40%)	31 (36%)

TABLE 2 | Performance (reaction time and accuracy) on the n-back tasks relative to cardiometabolic burden.

		No cardiometabolic burden	1 cardiometabolic factor	≥ 2 cardiometabolic factor	Total sample
Reaction time					
0-back	Mean	411.39	423.59	425.25	421.54
	SD	56.34	48.66	49.98	50.56
1-back	Mean	506.58	522.05	517.86	517.07
	SD	98.10	92.51	65.24	83.73
2-back	Mean	710.16	737.31	737.40	731.38
	SD	118.00	136.90	127.44	128.24
Accuracy: correct hits (to targets)					
0-back	<i>n</i> trials	49	49	49	49
	%	98	98	98	98
1-back	<i>n</i> trials	48	48	48	48
	%	96	96	96	96
2-back	<i>n</i> trials	32	27	26	28
	%	64	54	52	56
Accuracy: correct rejections (to non-targets)					
0-back	<i>n</i> trials	97	97	97	97
	%	97	97	97	97
1-back	<i>n</i> trials	97	96	97	96
	%	97	96	97	96
2-back	<i>n</i> trials	89	86	85	86
	%	89	86	85	86

studies have reported more widespread cortical thinning (6–11). Cumulative effects on multiple neural generators of the P3b is likely why widespread cortical thinning has larger effects on the P3b and smaller effects on more localized components, such as the P1 and N1 components (at least when the whole sample was included in analyses).

To our knowledge, no ERP study has assessed associations with a composite (or even multiple independent markers of) cardiometabolic health. Attenuated P3b component amplitudes have been reported in obese children (46). However, many psychiatric conditions are associated with cardiometabolic burden, such as schizophrenia, even around the time of diagnosis (47). There are many decades of research assessing and describing ERP differences between clinical and control

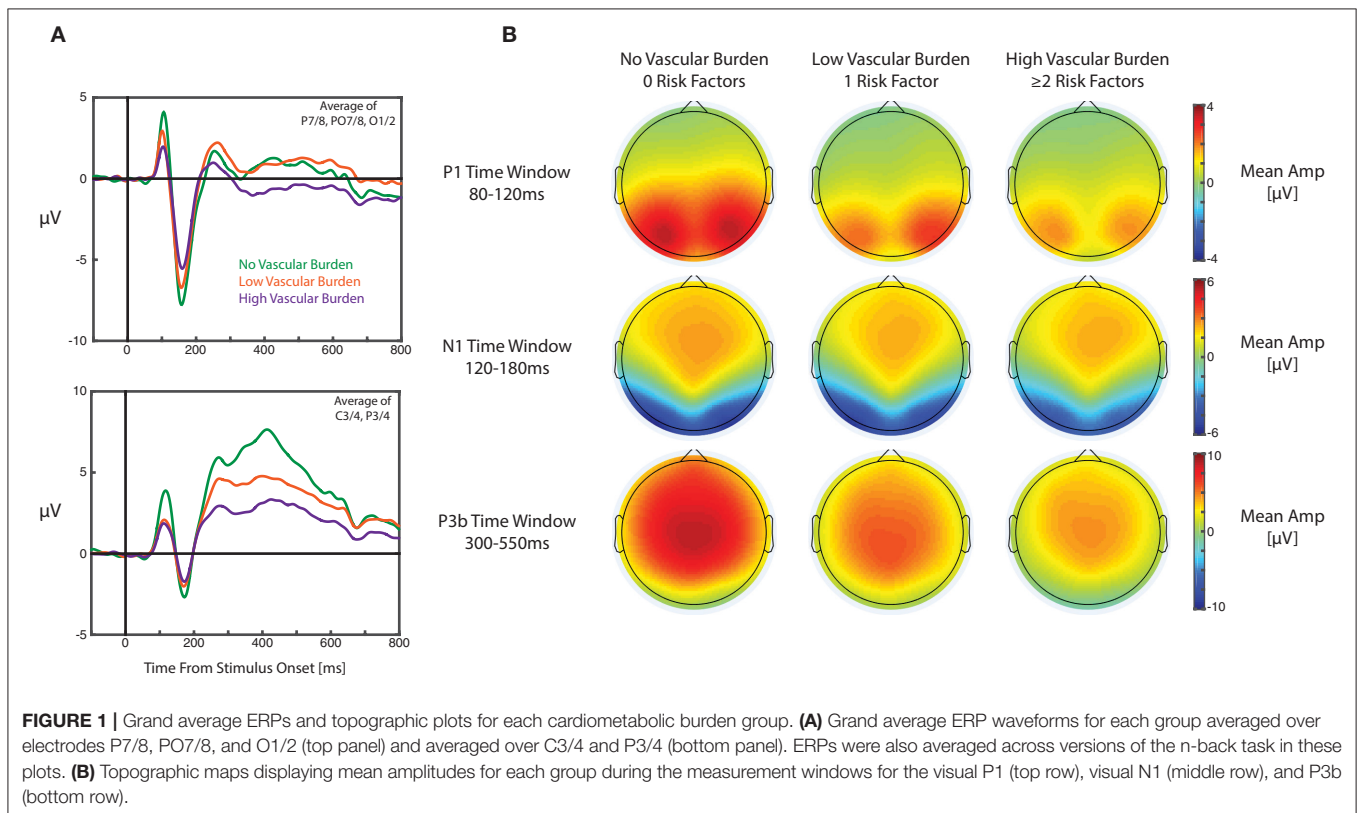
groups (48), including schizophrenia (49, 50). From our data, it is likely that smaller ERP component amplitudes are not only due to experimental and paradigm factors, such as impaired sensory coding, perceptual categorization, and impaired attention, but rather, also physiological differences, related to cardiometabolic health and its related downstream cerebrovascular (6), structural gray and white changes (13), along with neurochemical and neuropathological associations (51). Differences between clinical and control groups in existing ERP studies may not be due entirely to cognitive deficits (for example, in attention) but rather, at least in part, due to differences in cardiometabolic health.

Given the critical role ascribed to the P3b in relation to accumulating sensory evidence in perceptual decisions [e.g.,

TABLE 3 | Results from mixed effects models for the P1, N1, and P3b ERP component amplitudes (primary analyses).

	Beta	Standard error	z	p	95%CI		r ²
P1 component							
Age	0.021	0.027	0.80	0.422	-0.031	0.073	<0.001
Gender*	-0.353	0.419	-0.84	0.399	-1.175	0.468	<0.001
Difficulty	0.052	0.060	0.88	0.379	-0.065	0.171	0.002
Hemisphere*	0.171	0.098	1.74	0.081	0.021	0.364	0.008
Cardiometabolic burden	-0.562	0.270	-2.08	0.037	-1.090	-0.033	<0.001
N1 component							
Age	-0.005	0.039	-0.14	0.890	-0.082	0.071	<0.001
Gender*	0.431	0.614	0.70	0.482	-0.772	1.635	<0.001
Difficulty	0.534	0.064	8.33	<0.001	0.409	0.660	0.170
Hemisphere*	-0.101	0.105	-0.96	0.336	-0.307	0.105	0.002
Cardiometabolic burden	0.136	0.395	0.34	0.731	-0.638	0.909	<0.001
P3b component							
Age	0.029	0.026	1.13	0.260	-0.022	0.080	<0.001
Gender*	-0.170	0.412	-0.41	0.680	-0.976	0.637	<0.001
Difficulty	0.056	0.050	1.11	0.266	-0.043	0.155	0.001
Hemisphere*	0.294	0.082	3.58	<0.001	0.133	0.455	0.014
Cardiometabolic burden	-0.703	0.265	-2.65	0.008	-1.223	-0.184	<0.001

*Gender = 1 female, 2 male; Hemisphere = 1 left, 2 right.



(52)], our results also suggest caution when comparing P3b amplitudes across groups with different cardiometabolic burden. For example, P3b peak amplitudes gradually decline from adolescence to older age (53). Reductions in participants' P3b

amplitudes have been interpreted as requiring less evidence to reach a decision, yet computational modeling studies indicate that older adults are actually more conservative in their decision-making, requiring more evidence for a decision

TABLE 4 | Results from mixed effects models for the P1, N1, and P3b ERP component amplitudes stratified by hemisphere (secondary analyses).

	Beta	Standard error	z	p	95%CI		r ²
P1 component: left hemisphere							
Age	0.015	0.028	0.54	0.586	-0.039	0.069	<0.001
Gender*	-0.251	0.437	-0.57	0.566	-1.106	0.605	<0.001
Difficulty	0.139	0.094	1.49	0.137	-0.044	0.323	0.014
Cardiometabolic burden	-0.484	0.281	-1.72	0.085	-1.035	-0.066	<0.001
P1 component: right hemisphere							
Age	0.028	0.026	1.09	0.276	-0.023	0.080	<0.001
Gender*	-0.493	0.413	-1.19	0.233	-1.304	0.317	<0.001
Difficulty	-0.025	0.080	-0.31	0.759	-1.181	0.132	0.001
Cardiometabolic burden	-0.631	0.266	-2.38	0.017	-1.152	-0.111	<0.001
N1 component: left hemisphere							
Age	-0.014	0.038	-0.37	0.710	-0.090	0.062	<0.001
Gender*	0.469	0.612	0.77	0.444	-0.731	1.667	<0.001
Difficulty	0.484	0.105	4.63	<0.001	0.279	0.690	0.131
Cardiometabolic burden	0.206	0.394	0.52	0.600	-0.565	0.978	<0.001
N1 component: right hemisphere							
Age	0.002	0.040	0.06	0.952	-0.076	0.080	<0.001
Gender*	0.388	0.628	0.62	0.536	-0.842	1.618	<0.001
Difficulty	0.584	0.084	6.96	<0.001	0.419	0.748	0.297
Cardiometabolic burden	0.057	0.402	0.14	0.887	-0.730	0.845	<0.001
P3b component: left hemisphere							
Age	0.026	0.027	0.96	0.335	-0.027	0.078	<0.001
Gender*	-0.037	0.421	-0.09	0.930	-0.861	0.787	<0.001
Difficulty	0.195	0.074	2.64	0.008	0.050	0.340	0.017
Cardiometabolic burden	-0.670	0.271	-2.48	0.013	-1.201	-0.140	<0.001
P3b component: right hemisphere							
Age	0.033	0.027	1.23	0.220	-0.020	0.086	<0.001
Gender*	-0.302	0.425	-0.71	0.477	-1.135	0.530	<0.001
Difficulty	-0.083	0.066	-1.26	0.208	-0.212	0.046	0.004
Cardiometabolic burden	-0.736	0.274	-2.67	0.007	-1.272	-0.200	<0.001

*Gender = 1 female, 2 male.

than younger adults [reviewed in (54)]. This discrepancy between ERPs and patterns of behavioral results may be partly explained by structural and functional changes associated with cardiometabolic burden, as reported in our study.

The major limitation of our study is that it is cross-sectional. Recent structural brain imaging studies have demonstrated patterns of change associated with cardiometabolic health that are different (to some extent) to cross-sectional studies. Walsh et al. (11) recently demonstrated that elevated blood glucose was associated with reductions of global gray matter volume over 4 years. Over 8 years of follow-up in the Baltimore Longitudinal Study of Aging (55), an increased rate of thinning in several brain regions in hypertensive individuals was reported as compared to normotensive individuals (left frontomarginal gyrus in the left hemisphere and the right superior temporal, fusiform, and lateral orbitofrontal cortex). Higher midlife blood pressure and longer durations of hypertension were associated with accelerated rates of cortical thinning in the right superior temporal gyrus (55). Future ERP studies

should assess longitudinal effects of cardiometabolic health. Another limitation is that we could not include smoking, which is a major vascular-related risk factor for dementia (2), as we had only a small number of smokers in our sample (which meant that we could not reliably assess such effects).

It should be noted that this was not a population-based study, and despite great efforts being put into recruiting participants across cognitive and physical health spectrums, our sample will suffer from bias. Our findings cannot be generalized to the population. It would have also been interesting to see our ERP findings in the context of functional and structural MRI data from the sample participants. This was, however, beyond the scope and financial constraints of the study.

The major strength of this study is the objective characterization of cardiometabolic health, as self-reported health is not often accurate (56, 57). In addition, our stratified sampling approach enabled us to have a large spread of cardiometabolic health. Lastly, we employed a widely used

TABLE 5 | Results from mixed effects models for the P1, N1, and P3b ERP component amplitudes stratified by cognitive status (secondary analyses).

	Beta	Standard error	z	p	95%CI		r ²
P1 component: no cognitive impairment							
Age	0.011	0.047	0.22	0.823	-0.082	0.103	<0.001
Gender*	0.093	0.663	0.14	0.888	-1.207	1.394	<0.001
Difficulty	-0.139	0.092	-1.51	0.131	-0.320	0.041	0.013
Hemisphere*	0.251	0.151	1.66	0.097	-0.045	0.548	0.016
Cardiometabolic burden	-0.119	0.407	-0.29	0.771	-0.916	0.679	<0.001
P1 component: cognitive impairment							
Age	0.027	0.031	0.87	0.382	-0.033	0.087	<0.001
Gender*	-0.606	0.516	-1.17	0.240	-1.617	0.405	<0.001
Difficulty	0.208	0.077	2.69	0.007	0.057	0.360	0.032
Hemisphere*	0.111	0.126	0.88	0.380	-0.137	0.358	0.003
Cardiometabolic burden	-0.901	0.345	-2.61	0.009	-1.578	-0.224	<0.001
N1 component: no cognitive impairment							
Age	0.009	0.065	0.14	0.892	-0.118	0.134	<0.001
Gender*	-0.007	0.910	-0.01	0.994	-1.791	1.777	<0.001
Difficulty	0.593	0.093	6.35	<0.001	0.410	0.776	0.220
Hemisphere*	-0.133	0.153	-0.86	0.387	-0.433	0.168	0.004
Cardiometabolic burden	0.363	0.563	0.65	0.518	-0.739	1.466	<0.001
N1 component: cognitive impairment							
Age	-0.010	0.049	-0.21	0.836	-0.106	0.086	<0.001
Gender*	0.834	0.830	1.01	0.315	-0.792	2.460	<0.001
Difficulty	0.486	0.088	5.53	<0.001	0.313	0.658	0.136
Hemisphere*	-0.075	0.144	-0.53	0.599	-0.357	0.206	0.001
Cardiometabolic burden	-0.118	0.553	-0.21	0.831	-1.202	0.966	<0.001
P3b component: no cognitive impairment							
Age	-0.020	0.050	-0.40	0.691	-0.118	0.078	<0.001
Gender*	0.560	0.701	0.80	0.424	-0.813	1.933	<0.001
Hemisphere*	-0.211	0.076	-2.77	0.006	-0.361	-0.062	0.019
Difficulty	0.395	0.125	3.16	0.002	0.150	0.640	0.025
Cardiometabolic burden	-0.365	0.433	-0.84	0.399	-1.214	0.484	<0.001
P3b component: cognitive impairment							
Age	0.064	0.026	2.45	0.014	0.013	0.115	<0.001
Gender*	-0.619	0.439	-1.41	0.158	-1.479	0.241	<0.001
Difficulty	0.276	0.065	4.24	<0.001	0.148	0.403	0.036
Hemisphere*	0.212	0.106	1.99	0.046	0.003	0.420	0.008
Cardiometabolic burden	-0.880	0.294	-3.00	0.003	-1.455	-0.304	<0.001

*Gender = 1 female, 2 male; Hemisphere = 1 left, 2 right.

cognitive paradigm (the n-back task), which permits the comparison of the strength of effects of cardiometabolic health against standard factors, such as hemisphere and difficulty. EEG is a cost effective and readily available technique, suitable for most participants (unlike other neuroimaging techniques, such as MRI, due to strict eligibility criteria), and we have shown it has utility in investigating the impacts of cardiometabolic health on the brain.

We have characterized cardiometabolic health objectively in a large sample of older adults to demonstrate that these factors are associated with brain activity. Effects were most notable for the P3b component, where increasing number of cardiometabolic factors above standard cut-offs was associated with attenuations

in the component, and most notable in those with cognitive impairment. Although effect sizes were small, they are of great importance in the context of the huge numbers of adults aging with high cardiometabolic burden. This study is the first to identify that functional brain health is influenced by broader cardiometabolic health, which, of note, are modifiable risk factors for late-life dementia (1, 2). ERPs may be more sensitive than cognitive tests to index intervention-related brain changes in late-life, for example, in multi-component or vascular interventions (58–60). Findings also have implications for the larger ERP literature, whereby cardiometabolic health should be considered as a factor influencing group differences (not just mood and cognitive differences).

DATA AVAILABILITY STATEMENT

The datasets generated for this study are available on request to the corresponding author.

ETHICS STATEMENT

The studies involving human participants were reviewed and approved by University of South Australia Human Ethics Committee. The patients/participants provided their written informed consent to participate in this study.

AUTHOR CONTRIBUTIONS

AS and HK conceptualized and designed the study. ET and DG collected the data and processed biological samples. DF and SC

processed the EEG data. HK conducted the statistical analysis and wrote the first manuscript draft. All authors contributed to the article and approved the submitted version.

FUNDING

DG was supported by Australian Government Research Training Program Scholarship. HK was supported by a NHMRC Dementia Research Leadership Fellowship (GNT1135676). AS was supported by an NHMRC-ARC Dementia Research Development Fellowship (GNT1097397).

ACKNOWLEDGMENTS

This manuscript has been released as a Pre-Print at biorxiv (61).

REFERENCES

- Norton S, Matthews FE, Barnes DE, Yaffe K, Brayne C. Potential for primary prevention of Alzheimer's disease: an analysis of population-based data. *Lancet Neurol.* (2014) 13:788–94. doi: 10.1016/S1474-4422(14)70136-X
- Livingston G, Sommerlad A, Orgeta V, Costafreda SG, Huntley J, Ames D, et al. Dementia prevention, intervention, and care. *Lancet.* (2017) 390:2673–734. doi: 10.1016/S0140-6736(17)31363-6
- Beydoun MA, Beydoun HA, Wang Y. Obesity and central obesity as risk factors for incident dementia and its subtypes: a systematic review and meta-analysis. *Obes Rev.* (2008) 9:204–18. doi: 10.1111/j.1467-789X.2008.00473.x
- Harrison SL, Stephan BCM, Siervo M, Granic A, Davies K, Wesnes KA, et al. Is there an association between metabolic syndrome and cognitive function in very old adults? The Newcastle 85+ study. *J Am Geriatr Soc.* (2015) 63:667–75. doi: 10.1111/jgs.13358
- Jack CR Jr, Knopman DS, Jagust WJ, Petersen RC, Weiner MW, Aisen PS, et al. Tracking pathophysiological processes in Alzheimer's disease: an updated hypothetical model of dynamic biomarkers. *Lancet Neurol.* (2013) 12:207–16. doi: 10.1016/S1474-4422(12)70291-0
- Last D, Alsop DC, Abduljalil AM, Marquis RP, De Bazelaire C, Hu K, et al. Global and regional effects of type 2 diabetes on brain tissue volumes and cerebral vasoreactivity. *Diabetes Care.* (2007) 30:1193–9. doi: 10.2337/dc06-2052
- Brundel M, Van Den Heuvel M, De Bresser J, Kappelle LJ, Biessels GJ. Cerebral cortical thickness in patients with type 2 diabetes. *J Neurol Sci.* (2010) 299:126–30. doi: 10.1016/j.jns.2010.08.048
- Leritz EC, Salat DH, Williams VJ, Schnyer DM, Rudolph JL, Lipsitz L, et al. Thickness of the human cerebral cortex is associated with metrics of cerebrovascular health in a normative sample of community dwelling older adults. *Neuroimage.* (2011) 54:2659–71. doi: 10.1016/j.neuroimage.2010.10.050
- Veit R, Kullmann S, Heni M, Machann J, Häring H-U, Fritsche A, et al. Reduced cortical thickness associated with visceral fat and BMI. *Neuroimage Clin.* (2014) 6:307–11. doi: 10.1016/j.nicl.2014.09.013
- Chen Z, Sun J, Yang Y, Lou X, Wang Y, Wang Y, et al. Cortical thinning in type 2 diabetes mellitus and recovering effects of insulin therapy. *J Clin Neurosci.* (2015) 22:275–9. doi: 10.1016/j.jocn.2014.07.014
- Walsh EI, Shaw M, Sachdev P, Anstey KJ, Cherbuin N. Brain atrophy in ageing: estimating effects of blood glucose levels vs. other type 2 diabetes effects. *Diabetes Metab.* (2017) 44:80–3. doi: 10.1016/j.diabet.2017.06.004
- Tchistiakova E, Macintosh BJ. Summative effects of vascular risk factors on cortical thickness in mild cognitive impairment. *Neurobiol Aging.* (2016) 45:98–106. doi: 10.1016/j.neurobiolaging.2016.05.011
- Fawns-Ritchie C, Liewald DC, Deary IJ, Gale CR, Buchanan CR, Cox SR, et al. Associations between vascular risk factors and brain MRI indices in UK Biobank. *Eur Heart J.* (2019) 40:2290–300. doi: 10.1093/eurheartj/ehz100
- Dufouil C, De Kersaint-Gilly A, Besancon V, Levy C, Auffray E, Brunnereau L, et al. Longitudinal study of blood pressure and white matter hyperintensities: the EVA MRI cohort. *Neurology.* (2001) 56:921–6. doi: 10.1212/WNL.56.7.921
- Prins ND, Scheltens P. White matter hyperintensities, cognitive impairment and dementia: an update. *Nat Rev Neurol.* (2015) 11:157–65. doi: 10.1038/nrneuro.2015.10
- Fuhrmann D, Nesbitt D, Shafto M, Rowe JB, Price D, Gadie A, et al. Strong and specific associations between cardiovascular risk factors and white matter micro- and macrostructure in healthy aging. *Neurobiol Aging.* (2019) 74:46–55. doi: 10.1016/j.neurobiolaging.2018.10.005
- Braskie MN, Small GW, Bookheimer SY. Vascular health risks and fMRI activation during a memory task in older adults. *Neurobiol Aging.* (2010) 31:1532–42. doi: 10.1016/j.neurobiolaging.2008.08.016
- Chuang Y-F, Eldreth D, Erickson KI, Varma V, Harris G, Fried LP, et al. Cardiovascular risks and brain function: a functional magnetic resonance imaging study of executive function in older adults. *Neurobiol Aging.* (2014) 35:1396–403. doi: 10.1016/j.neurobiolaging.2013.12.008
- Wolf PA, D'agostino RB, Belanger AJ, Kannel WB. Probability of stroke: a risk profile from the Framingham Study. *Stroke.* (1991) 22:312–8. doi: 10.1161/01.STR.22.3.312
- Elias PK, Elias ME, Robbins MA, Budge MM. Blood pressure-related cognitive decline: does age make a difference? *Hypertension.* (2004) 44:631–6. doi: 10.1161/01.HYP.0000145858.07252.99
- Alcorn T, Hart E, Smith AE, Feuerriegel D, Stephan BCM, Siervo M, et al. Cross-sectional associations between metabolic syndrome and performance across cognitive domains: a systematic review. *Appl Neuropsychol Adult.* (2017) 26:186–99. doi: 10.1080/23279095.2017.1363039
- Fontbonne A, Berr C, Ducimetière P, Alperovitch A. Changes in cognitive abilities over a 4-year period are unfavorably affected in elderly diabetic subjects. Results of the epidemiology of vascular aging study. *Diabetes Care.* (2001) 24:366–70. doi: 10.2337/diacare.24.2.366
- Vasquez BP, Zakzanis KK. The neuropsychological profile of vascular cognitive impairment not demented: a meta-analysis. *J Neuropsychol.* (2015) 9:109–36. doi: 10.1111/jnp.12039
- Mioshi E, Dawson K, Mitchell J, Arnold R, Hodges JR. The Addenbrooke's cognitive examination revised (ACE-R): a brief cognitive test battery for dementia screening. *Int J Geriatr Psychiatry.* (2006) 21:1078–85. doi: 10.1002/gps.1610
- Harrison SL, De Craen AJ, Kerse N, Teh R, Granic A, Davies K, et al. Predicting risk of cognitive decline in very old adults using three models: the framingham stroke risk profile; the cardiovascular risk factors, aging, and dementia model; and oxi-inflammatory biomarkers. *J Am Geriatr Soc.* (2017) 65:381–9. doi: 10.1111/jgs.14532
- Hsieh S, Schubert S, Hoon C, Mioshi E, Hodges JR. Validation of the Addenbrooke's cognitive examination III in frontotemporal dementia and Alzheimer's disease. *Dement Geriatr Cogn Disord.* (2013) 36:242–50. doi: 10.1159/000351671
- Anstey KJ, Ashby-Mitchell K, Peters R. Updating the evidence on the association between serum cholesterol and risk of late-life

- dementia: review and meta-analysis. *J Alzheimers Dis.* (2017) 56:215–28. doi: 10.3233/JAD-160826
28. Howe-Davies S, Simpson RW, Turner RC. Control of maturity-onset diabetes by monitoring fasting blood glucose and body weight. *Diabetes Care.* (1980) 3:607–10. doi: 10.2337/diacare.3.5.607
 29. Carson AP, Reynolds K, Fonseca VA, Muntner P. Comparison of A1C and fasting glucose criteria to diagnose diabetes among U.S. adults. *Diabetes Care.* (2010) 33:95–7. doi: 10.2337/dc09-1227
 30. Gill T, Chittleborough C, Taylor A, Ruffin R, Wilson D, Phillips P. Body mass index, waist hip ratio, and waist circumference: which measure to classify obesity? *Soc Prev Med.* (2003) 48:191–200. doi: 10.1007/s00038-003-2055-1
 31. WHO. *Waist Circumference and Waist-Hip Ratio: Report of a WHO Expert Consultation, Geneva, 8–11 December 2008.* Geneva: World Health Organisation (WHO) Press (2011).
 32. Solomon A, Kåreholt I, Ngandu T, Wolozin B, Macdonald SWS, Winblad B, et al. Serum total cholesterol, statins and cognition in non-demented elderly. *Neurobiol Aging.* (2009) 30:1006–9. doi: 10.1016/j.neurobiolaging.2007.09.012
 33. Muntner P, Carey Robert M, Gidding S, Jones Daniel W, Taler Sandra J, Wright Jackson T, et al. Potential US population impact of the 2017 ACC/AHA high blood pressure guideline. *Circulation.* (2018) 137:109–18. doi: 10.1161/CIRCULATIONAHA.117.032582
 34. Whelton PK, Carey RM, Aronow WS, Casey DE, Collins KJ, Dennison Himmelfarb C, et al. 2017 ACC/AHA/AAPA/ABC/ACPM/AGS/APHA/ASH/ASPC/NMA/PCNA guideline for the prevention, detection, evaluation, and management of high blood pressure in adults. A report of the American College of Cardiology/American Heart Association task force on clinical practice guidelines. *Hypertension.* (2018) 71:e127–248. doi: 10.1161/HYP.0000000000000065
 35. Delorme A, Makeig S. EEGLAB: an open source toolbox for analysis of single-trial EEG dynamics including independent component analysis. *J Neurosci Methods.* (2004) 134:9–21. doi: 10.1016/j.jneumeth.2003.10.009
 36. Lopez-Calderon J, Luck SJ. ERPLAB: an open-source toolbox for the analysis of event-related potentials. *Front Hum Neurosci.* (2014) 8:213. doi: 10.3389/fnhum.2014.00213
 37. Mullen T. *CleanLine EEGLAB Plugin.* San Diego, CA: Neuroimaging Informatics Tools and Resources Clearinghouse (NITRC) (2012).
 38. Bigdely-Shamlo N, Mullen T, Kothe C, Su KM, Robbins KA. The PREP pipeline: standardized preprocessing for large-scale EEG analysis. *Front Neuroinform.* (2015) 9:16. doi: 10.3389/fninf.2015.00016
 39. Feuerriegel D, Churches O, Coussens S, Keage HD. Evidence for spatiotemporally distinct effects of image repetition and perceptual expectations as measured by event-related potentials. *Neuroimage.* (2018) 169:94–105. doi: 10.1016/j.neuroimage.2017.12.029
 40. Jung TP, Makeig S, Westerfield M, Townsend J, Courchesne E, Sejnowski TJ. Removal of eye activity artifacts from visual event-related potentials in normal and clinical subjects. *Clin Neurophysiol.* (2000) 111:1745–58. doi: 10.1016/S1388-2457(00)00386-2
 41. Chaumon M, Bishop DVM, Busch NA. A practical guide to the selection of independent components of the electroencephalogram for artifact correction. *J Neurosci Methods.* (2015) 250:47–63. doi: 10.1016/j.jneumeth.2015.02.025
 42. Kalaria RN. Cerebrovascular disease and mechanisms of cognitive impairment. *Stroke.* (2012) 43:2526–34. doi: 10.1161/STROKEAHA.112.655803
 43. Stephan BCM, Harrison SL, Keage HD, Babateen A, Robinson L, Siervo M. Cardiovascular disease, the nitric oxide pathway and risk of cognitive impairment and dementia. *Curr Cardiol Rep.* (2017) 19:87. doi: 10.1007/s11886-017-0898-y
 44. Volpe U, Mucci A, Bucci P, Merlotti E, Galderisi S, Maj M. The cortical generators of P3a and P3b: A LORETA study. *Brain Res Bull.* (2007) 73:220–30. doi: 10.1016/j.brainresbull.2007.03.003
 45. Bachiller A, Romero S, Molina V, Alonso JF, Mañanas MA, Poza J, et al. Auditory P3a and P3b neural generators in schizophrenia: an adaptive sLORETA P300 localization approach. *Schizophr Res.* (2015) 169:318–25. doi: 10.1016/j.schres.2015.09.028
 46. Tascilar ME, Turkkahraman D, Oz O, Yucel M, Taskesen M, Eker I, et al. P300 auditory event-related potentials in children with obesity: is childhood obesity related to impairment in cognitive functions? *Pediatr Diabetes.* (2011) 12:589–95. doi: 10.1111/j.1399-5448.2010.00748.x
 47. Correll CU, Robinson DG, Schooler NR, Brunette MF, Mueser KT, Rosenheck RA, et al. Cardiometabolic risk in patients with first-episode schizophrenia spectrum disorders: baseline results from the RAISE-ETP studycardiometabolic risk and first-episode schizophrenia spectrum disorderscardiometabolic risk and first-episode schizophrenia spectrum disorders. *JAMA Psychiatry.* (2014) 71:1350–63. doi: 10.1001/jamapsychiatry.2014.1314
 48. Kappenman ES, Luck SJ. Best practices for event-related potential research in clinical populations. *Biol Psychiatry.* (2016) 1:110–5. doi: 10.1016/j.bpsc.2015.11.007
 49. Feuerriegel D, Churches O, Hofmann J, Keage HA. The N170 and face perception in psychiatric and neurological disorders: a systematic review. *Clin Neurophysiol.* (2015) 126:1141–58. doi: 10.1016/j.clinph.2014.09.015
 50. McCleery A, Lee J, Joshi A, Wynn JK, Hellemann GS, Green MF. Meta-analysis of face processing event-related potentials in schizophrenia. *Biol Psychiatry.* (2015) 77:116–26. doi: 10.1016/j.biopsych.2014.04.015
 51. Kalaria RN. Vascular basis for brain degeneration: faltering controls and risk factors for dementia. *Nutr Rev.* (2010) 68:S74–87. doi: 10.1111/j.1753-4887.2010.00352.x
 52. Twomey DM, Murphy PR, Kelly SP, O'Connell RG. The classic P300 encodes a build-to-threshold decision variable. *Eur J Neurosci.* (2015) 42:1636–43. doi: 10.1111/ejn.12936
 53. Rossini PM, Rossi S, Babiloni C, Polich J. Clinical neurophysiology of aging brain: from normal aging to neurodegeneration. *Prog Neurobiol.* (2007) 83:375–400. doi: 10.1016/j.pneurobio.2007.07.010
 54. Dully J, Mcgovern DP, O'Connell RG. The impact of natural aging on computational and neural indices of perceptual decision making: a review. *Behav Brain Res.* (2018) 355:48–55. doi: 10.1016/j.bbr.2018.02.001
 55. Gonzalez CE, Pacheco J, Beason-Held LL, Resnick SM. Longitudinal changes in cortical thinning associated with hypertension. *J Hypertension.* (2015) 33:1242–8. doi: 10.1097/HJH.0000000000000531
 56. Okura Y, Urban LH, Mahoney DW, Jacobsen SJ, Rodeheffer RJ. Agreement between self-report questionnaires and medical record data was substantial for diabetes, hypertension, myocardial infarction and stroke but not for heart failure. *J Clin Epidemiol.* (2004) 57:1096–103. doi: 10.1016/j.jclinepi.2004.04.005
 57. Johnston DW, Propper C, Shields MA. Comparing subjective and objective measures of health: evidence from hypertension for the income/health gradient. *J Health Econ.* (2009) 28:540–52. doi: 10.1016/j.jhealeco.2009.02.010
 58. Kivipelto M, Solomon A, Ahtiluoto S, Ngandu T, Lehtisalo J, Antikainen R, et al. The Finnish geriatric intervention study to prevent cognitive impairment and disability (FINGER): study design and progress. *Alzheimers Dement.* (2013) 9:657–65. doi: 10.1016/j.jalz.2012.09.012
 59. Ngandu T, Lehtisalo J, Solomon A, Levälähti E, Ahtiluoto S, Antikainen R, et al. A 2 year multidomain intervention of diet, exercise, cognitive training, and vascular risk monitoring versus control to prevent cognitive decline in at-risk elderly people (FINGER): a randomised controlled trial. *Lancet.* (2015) 385:2255–63. doi: 10.1016/S0140-6736(15)60461-5
 60. Sprint-Mind-Investigators. Effect of intensive vs standard blood pressure control on probable dementia: a randomized clinical trial effect of intensive vs standard blood pressure control on probable dementia effect of intensive vs standard blood pressure control on probable dementia. *JAMA.* (2019) 321:553–61. doi: 10.1001/jama.2018.21442
 61. Keage HAD, Feuerriegel D, Greaves D, Tregoweth E, Coussens S, Smith AE. Increasing objective cardiometabolic burden associated with attenuations in the P3b event-related potential component in older adults. *bioRxiv [Preprint].* (2019). doi: 10.1101/634873

Conflict of Interest: The authors declare that the research was conducted in the absence of any commercial or financial relationships that could be construed as a potential conflict of interest.

Copyright © 2020 Keage, Feuerriegel, Greaves, Tregoweth, Coussens and Smith. This is an open-access article distributed under the terms of the Creative Commons Attribution License (CC BY). The use, distribution or reproduction in other forums is permitted, provided the original author(s) and the copyright owner(s) are credited and that the original publication in this journal is cited, in accordance with accepted academic practice. No use, distribution or reproduction is permitted which does not comply with these terms.



Minerva Access is the Institutional Repository of The University of Melbourne

Author/s:

Keage, HAD;Feuerriegel, D;Greaves, D;Tregoweth, E;Coussens, S;Smith, AE

Title:

Increasing Objective Cardiometabolic Burden Associated With Attenuations in the P3b Event-Related Potential Component in Older Adults

Date:

2020-07-30

Citation:

Keage, H. A. D., Feuerriegel, D., Greaves, D., Tregoweth, E., Coussens, S. & Smith, A. E. (2020). Increasing Objective Cardiometabolic Burden Associated With Attenuations in the P3b Event-Related Potential Component in Older Adults. FRONTIERS IN NEUROLOGY, 11, <https://doi.org/10.3389/fneur.2020.00643>.

Persistent Link:

<http://hdl.handle.net/11343/247637>

License:

[CC BY](#)